



October 2024 Update

THE FUTURE OF OUR NEIGHBOURHOOD

Earlier this year we reported on Enfield Council's consultation on development plans for the Borough:

<https://foxlane.net/wp-content/uploads/2024/04/IMPORTANT-PLANS-FOR-PALMERS-GREEN-AND-SOUTHGATE.pdf>

The government's Planning Inspectorate has examined the plan and raised some important questions.

You will recall that the proposals include high-density high-rise buildings in Palmers Green (for example, replacing Lodge Drive Car Park, Morrisons' Car Park, and St. Anne's Catholic School), and Southgate (for example, in the Michenden Car Park and Alan Pullinger sites) as well as large developments on protected Green Belt land (such as Vicarage Farm open land, next to Trent Park, and Crews Hill). High-density developments are intended to be "carless", that is, with no parking provided, it is anticipated that increased demand for on-street parking will lead to the creation of large CPZ zones (controlled, paid parking for residents) around town centres and transport hubs as is already proposed for the Arnos Grove area following the approval of housing development in the former Arnos Grove Car Park.

Several local organisations helped residents to navigate the complicated consultation documents and representations system, and it is understood that thousands of individuals and groups submitted comments.

FLDRA expressed support for the increased provision of genuinely affordable homes, but pointed out that sufficient brownfield sites are reportedly available in Enfield (see Enfield RoadWatch, Better Homes Enfield websites) to meet housing targets without the need to substantially alter the character and landscape of our residential areas, or to take away irreplaceable and much-loved greenbelt fields. All responses to the consultation were intended to be sent to the Planning Inspector, but it emerged that a large number (over 1,000 according to RoadWatch), including FLDRA's, had not been forwarded by Enfield Council by error. The Planning Inspector, Steven Lee, asked the Council to correct the errors by 1 September.

The Inspector has made his first response to Enfield's proposed plan, raising the following questions, among others:

- On what basis were "strategic" sites for housing development identified and assessed?
- What specific, deliverable sites have been identified for the 5 years following the date of adoption of the Plan and what is the anticipated five-year housing supply position?
- How much land is proposed to be removed from the Green Belt? What built form is envisaged for this area and has any assessment of whether this would constitute inappropriate development in the Green Belt been carried out?
- What transport infrastructure investment is needed to deliver the Plan? Are these projects funded? Have these needs been factored into any new housing viability assessments? Are there any areas of dispute with the highway authorities?
- What are the implications of the Plan's housing proposals for retail and leisure floorspace? Have the site allocations taken into account future retail needs?
- The growing elderly population challenge is likely to require adaptation to changing demands. How does the Plan seek to accommodate the needs identified for older people?

Enfield Council is expected to reply to most of the Inspector's questions by 1 November 2024.

Events of interest involving the association in your local area:

The Choir of Christ Church Southgate, directed by William Waine, and orchestra led by **Liz Partridge (One of your committee members!)**, present the much-loved annual Christ the King Concert.

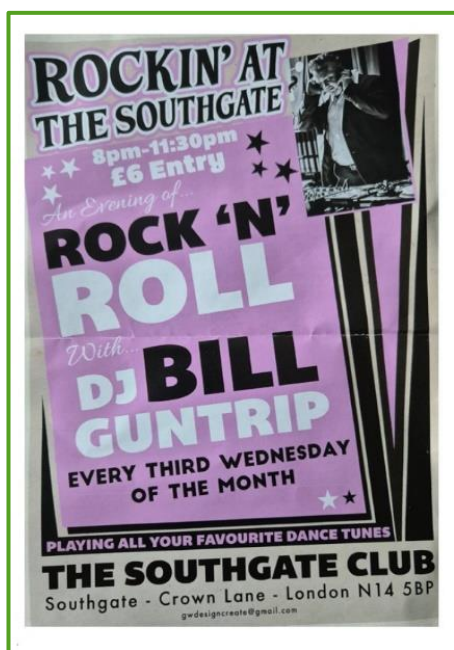
Featuring vocal and orchestral fireworks in Haydn's Mass for troubled times (Nelson Mass), the splendour of Purcell's Te Deum and Jubilant and two exuberant symphonies by William Boyce.



The Choir of Christ Church Southgate enjoys a reputation as one of north London's finest voluntary auditioned choirs. As a large choir of over 30 singers, both adults and children, the Choir sings both Eucharist and Choral Evensong on most Sundays, on major Feast Days, for tours across the UK and abroad, and in concerts and recordings.

All proceeds from this concert support the work of the choir, a centre of excellence in Parish music, and one of the last in the north London area to proudly keep alive the tradition of singing a full Choral Evensong on a weekly basis.

Sunday 24th November, 2024 – Tickets available here: <https://wegottickets.com/event/636967>



Fancy yourself as bit of a mover!

Well, this local event might be just for you. It's a very welcoming group of mixed abilities that get together to dance and socialize.

Why not dust off your dancing shoes and give it try, you may see one or two of your committee there too!..

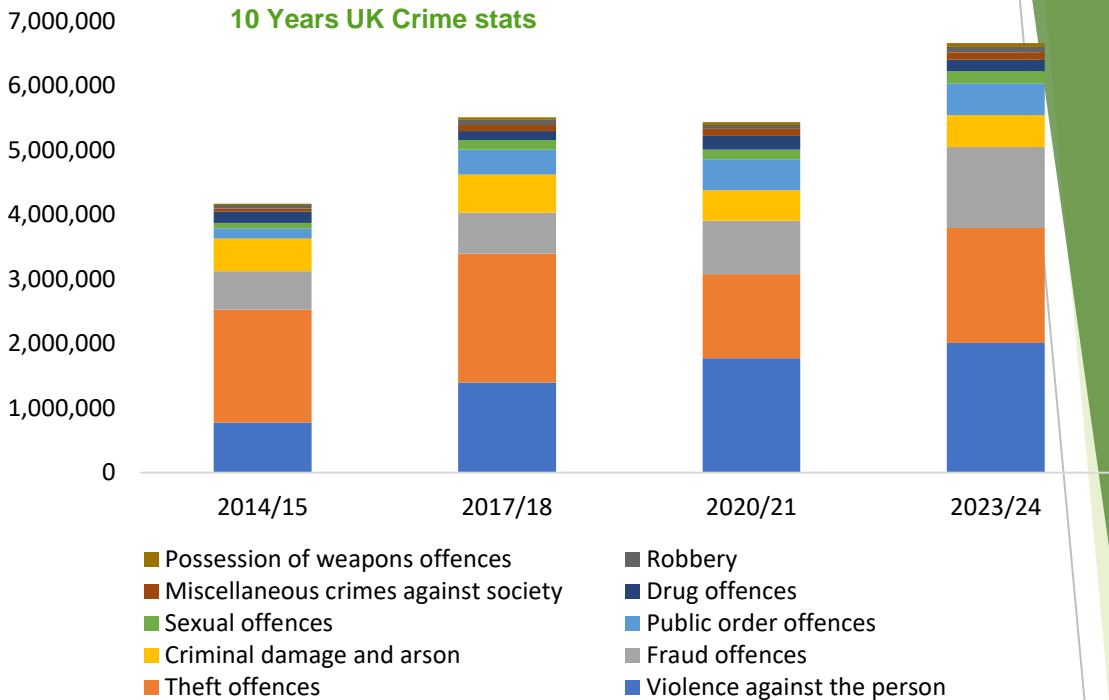
They even welcomed me to the dance floor despite the fact my dancing deserves be listed in the crime stats for the area!

By the way a great resource for things going on locally is:

<https://www.pgweb.uk/newsletters/newsletter>

Crime stats | UK Wide (Published by the Home Office)

In our next update we'll take a look at some of the data across the specific wards that cover the FLDRA catchment area but I thought it would be useful to set the scene and have some context for the more local crime stats.



Police recorded crime	2014/15	2017/18	2020/21	2023/24	% Increase
Violence against the person	778,198	1,397,742	1,774,439	2,013,270	159%
Theft offences	1,750,607	1,994,787	1,301,426	1,777,684	2%
Fraud offences	593,067	638,358	828,365	1,255,471	112%
Criminal damage and arson	503,259	586,910	471,343	496,502	-1%
Public order offences	159,217	386,612	483,292	488,195	207%
Sexual offences	88,576	152,881	147,718	188,708	113%
Drug offences	170,689	138,318	211,116	181,781	6%
Miscellaneous crimes against society	51,962	94,654	111,522	114,375	120%
Robbery	50,154	77,246	59,650	81,030	62%
Possession of weapons offences	21,890	39,049	44,693	58,089	165%
Grand Total	4,167,619	5,506,557	5,433,564	6,655,105	
<i>Cumulative % change to 2014/15</i>		32%	30%	60%	

2024/25 Excluded (only 3 months live data) but "suggests" an increase on the prior year

- Total reported crimes have increased by 60% over the last 10 years to the year ended 2023/24
- 76% of all reported crimes fall under Violence against a person, Theft & Fraud
- Biggest increases: Public order offences, possession of weapons and violence against a person

Crime stats | A lens on Enfield

2014/15

Location	Rank	Volume	Location	Rank	Volume	Vs 2014/15
Birmingham	Highest	74,727	Birmingham	Highest	101,115	35%
Enfield	34	22,183	Enfield	48	25,718	16%
Isles of Scilly	Lowest	70	Isles of Scilly	Lowest	99	41%

Similar rates to Enfield

Location	Rank	Volume	Location	Rank	Volume	Vs 2014/15
Brighton	31	22,587	Stockport	45	26,209	64%
Cornwall	32	22,450	Brighton	46	25,941	15%
Wandsworth	33	22,301	Coventry	47	25,738	20%
Enfield	34	22,183	Enfield	48	25,718	16%
Newcastle	35	22,113	Rotherham	49	25,626	50%
Lewisham	36	21,951	Wandsworth	50	25,571	15%
Hillingdon	37	21,715	Hounslow	51	24,952	21%

2020/21

Location	Rank	Volume	Vs 2014/15
Birmingham	Highest	119,399	60%
Enfield	33	27,939	26%
Isles of Scilly	Lowest	24	-66%

Similar rates to Enfield

Location	Rank	Volume	Vs 2014/15
Ealing	30	28,350	10%
Southampton	31	28,274	21%
North Yorkshire	32	28,224	18%
Enfield	33	27,939	26%
Brent	34	27,881	12%
Haringey	35	27,775	17%
Cheshire East	36	27,191	72%

2017/18

Location	Rank	Volume	Location	Rank	Volume	Vs 2014/15
Birmingham	Highest	101,115	Birmingham	Highest	101,115	35%
Enfield	48	25,718	Enfield	48	25,718	16%
Isles of Scilly	Lowest	99	Isles of Scilly	Lowest	99	41%

Similar rates to Enfield

Location	Rank	Volume	Location	Rank	Volume	Vs 2014/15
Stockport	45	26,209	Stockport	45	26,209	64%
Brighton	46	25,941	Brighton	46	25,941	15%
Coventry	47	25,738	Coventry	47	25,738	20%
Enfield	48	25,718	Enfield	48	25,718	16%
Rotherham	49	25,626	Rotherham	49	25,626	50%
Wandsworth	50	25,571	Wandsworth	50	25,571	15%
Hounslow	51	24,952	Hounslow	51	24,952	21%

2023/24

Location	Rank	Volume	Vs 2014/15
Birmingham	Highest	140,408	88%
Enfield	42	29,210	32%
Isles of Scilly	Lowest	71	1%

Similar rates to Enfield

Location	Rank	Volume	Vs 2014/15
Lewisham	39	29,842	36%
Haringey	40	29,526	25%
Sunderland	41	29,248	94%
Enfield	42	29,210	32%
Brighton	43	29,011	28%
Greenwich	44	28,857	38%
Barnet	45	28,855	26%

Birmingham has consistently recorded the highest number of crimes over the last 10 years and conversely the Isle of Scilly has remained the lowest.

Over the last 10 years Enfield has seen a 32% increase in recorded crimes vs the 60% increase UK wide and has moved from the 32nd highest to the 42nd. Clearly the mix and type of crimes and the concentration across Enfield is significant but you could be tempted to see this as an improvement in terms of living in Enfield.

Is Enfield a safe place to live? (I make no claims here) but statistically of the 320 places where the Home Office collects crime data there are 278 places with lower recorded crimes and 41 places with higher. (Absolute volumes)

Obviously, the number of residents in those areas, the landmass/concentration, the socio economic & multiple other influencing factors could come into play. So, comparing the Birmingham metropolitan area which covers 598 square kilometres and boasts a population of more than 4 million individuals to the Isle of Scilly with just over 2,000 residents is not an easy thing to do and maybe not even helpful? (Enfield for reference has ~330,000 residents)

I'm not going to start calculating the number of crimes per capita as I don't think that has any real-life significance (but feel free to do so), however the types and mix of crimes may be more meaningful.

Crime stats | A lens on Enfield

Looking at the data for Enfield 2023/24 my personal summary is: We have **more vehicle related and general theft crimes**, but **far less violence and crimes of a sexual nature** when compared to the UK in general. *You may look at the data and come to a different conclusion!*

2023/24

Areas where Enfield's mix of crimes is higher than the national average

Type of crime	% of total crimes		Enfield Volume	Vs UK
	UK	Enfield		
Theft of a motor vehicle	3%	7%	1,944	166%
Robbery of personal property	1%	3%	874	131%
Theft from a vehicle	4%	8%	2,394	127%
Vehicle interference	1%	2%	574	97%
Trafficking of drugs	1%	2%	514	79%
Robbery of business property	0%	0%	89	59%
Domestic burglary	3%	5%	1,559	55%
Theft from the person	2%	3%	919	41%
Non-domestic burglary	2%	2%	625	38%
Homicide	0%	0%	4	28%
Other theft offences	9%	10%	3,033	16%

- More of the crimes in Enfield are focused around the motor vehicle than the national average. In the year 2023/24 of the total 29,210 crimes reported in Enfield 4,912 (17%) related to motor vehicles vs the UK average of 7% which is more than twice the national rate.
- Domestic burglary, robbery/theft & trafficking of drugs are a higher proportion of crimes in Enfield than reported in the UK.

2023/24

Areas where Enfield's mix of crimes is lower than the national average

Type of crime	% of total crimes		Enfield Volume	Vs UK
	UK	Enfield		
Death or serious injury - unlawful driving	0%	0%	3	-67%
Bicycle theft	1%	1%	184	-46%
Miscellaneous crimes	2%	1%	338	-46%
Shoplifting	8%	5%	1,379	-43%
Stalking and Harassment	12%	8%	2,207	-37%
Public order offences	9%	6%	1,800	-31%
Possession of weapons offences	1%	1%	221	-30%
Criminal damage	9%	7%	1,987	-22%
Arson	0%	0%	101	-22%
Other sexual offences	2%	2%	532	-19%
Rape offences	1%	1%	311	-16%
Violence without injury	15%	14%	4,068	-8%
Possession of drugs	2%	2%	647	-6%
Violence with injury	10%	10%	2,903	-5%

- Less of our crimes are focused on violence whether that is public order offences, weapons related & violence that did or didn't result in injury.
- Rape, stalking & other sexual offences are all a lower share of those crimes reported in Enfield
- As a percentage of total crimes reported we also see less shoplifting and criminal damage

With all of this data it's the detail behind the statistics that are important so pure percentages, shares or volumes in isolation do not paint the whole picture or may even be misleading. For example, we may have less reported shoplifting as a percentage of total crime not because things are getting better but perhaps because we have less retail outlets open, or perhaps things are getting reported less?

I'll limit myself to reporting the data and let you arrive at your own conclusions on the influencing factors. In our next update we'll take a look at some of the data across the specific wards that cover the FLDR catchment area but I thought it would be useful to set the scene and have some context for the more local crime stats. + *I think I've already bombarded you with way too many numbers!*

Wards and councillors | Did you know the FLDRA covers 4 wards:

I mentioned in a previous update that I would be reaching out to our councillors so I thought it may be of interest to you to have their details

Arnos Groves:

Cllr.Paul.Pratt@enfield.gov.uk
Cllr.Adrian.Grumi@enfield.gov.uk

Southgate:

Cllr.Stephanos.Ioannou@Enfield.gov.uk
Cllr.Chris.Joannides@enfield.gov.uk
Cllr.Elisa.Morreale@enfield.gov.uk

Palmers Green:

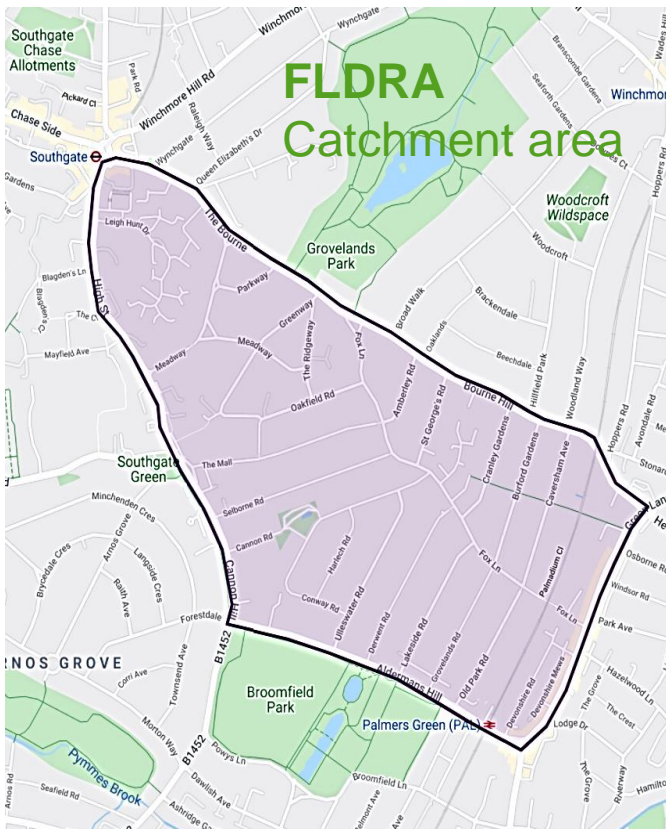
Cllr.Chris.James@enfield.gov.uk
cldr.doug.taylor@enfield.gov.uk

Winchmore Hill:

Cllr.Maria.Alexandrou@Enfield.gov.uk
Cllr.Lee.Chamberlain@enfield.gov.uk

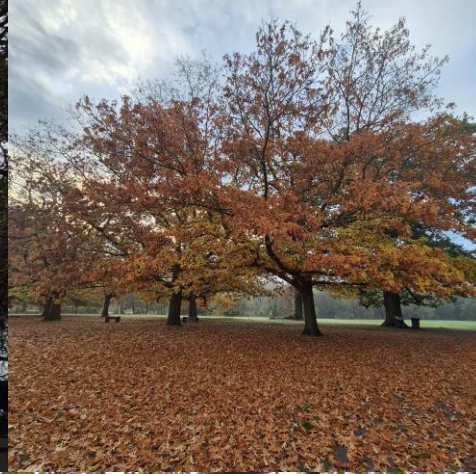
If you do need to find a councillor or work out who deals with a particular issue you can use the councils web site and go to: Home / Services / Councillors and democracy / Find Councillor

Or just follow this link: <https://governance.enfield.gov.uk/mgFindMember.aspx>



**Fox Lane & District
Residents' Association**





Fox Lane & District
Residents' Association



And on a brighter note!

We are fortunate to live in an area that offers us access to a number of local parks and greenery. Even at this time of year it's still possible to see some beautiful scenes. Here are some snaps from a recent walk that brought a smile to my face, hope you recognise where this is!